

Beaumont

Connecting your Computer to BHapps

System Requirements

This Tech Tip is intended for Beaumont users with **fully updated** computers running:

- Microsoft Windows (Supported devices and releases)
- Apple MacOS (Supported devices and releases)

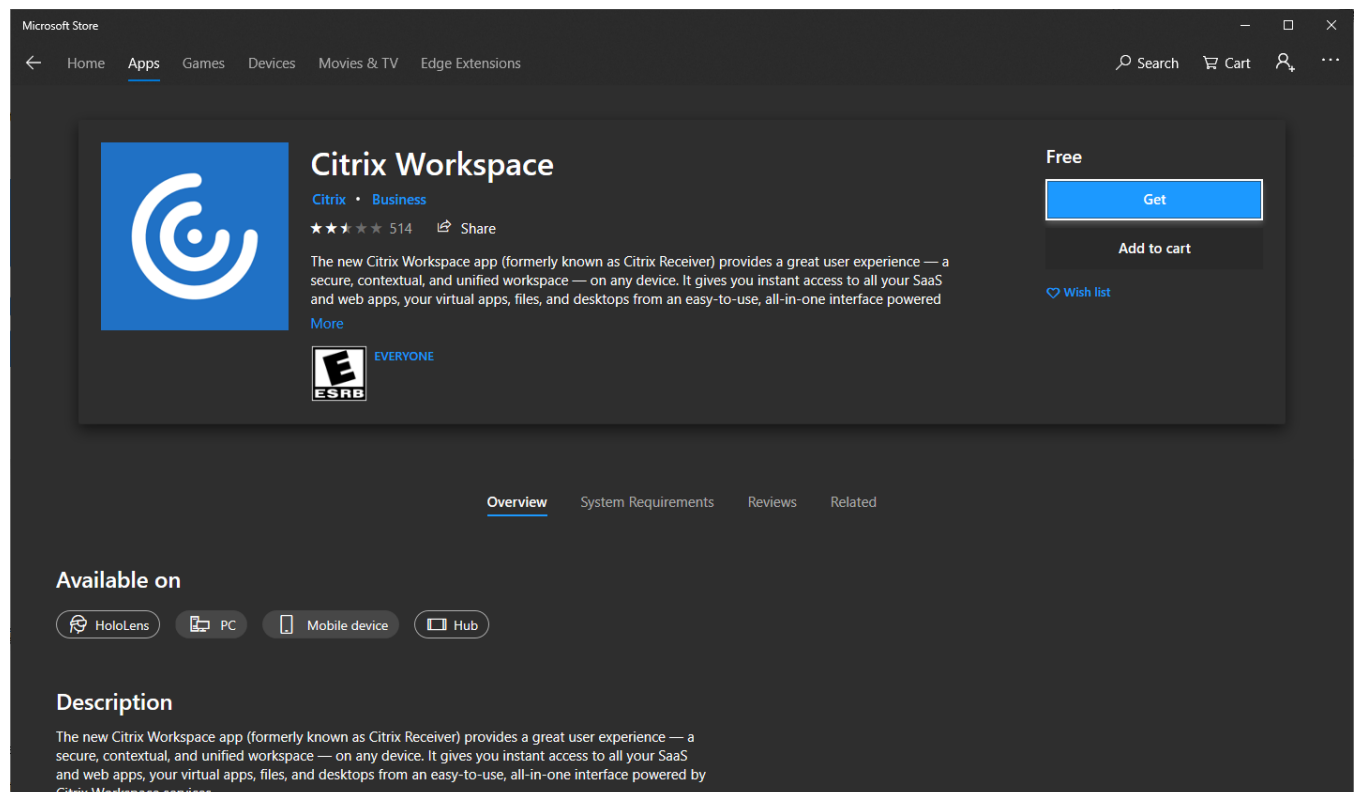
[Click here if you are using a privately-owned computer.](#)

[Click here if you are using a Beaumont-owned or leased computer.](#)

For Privately-owned Computers: Download Citrix Workspace

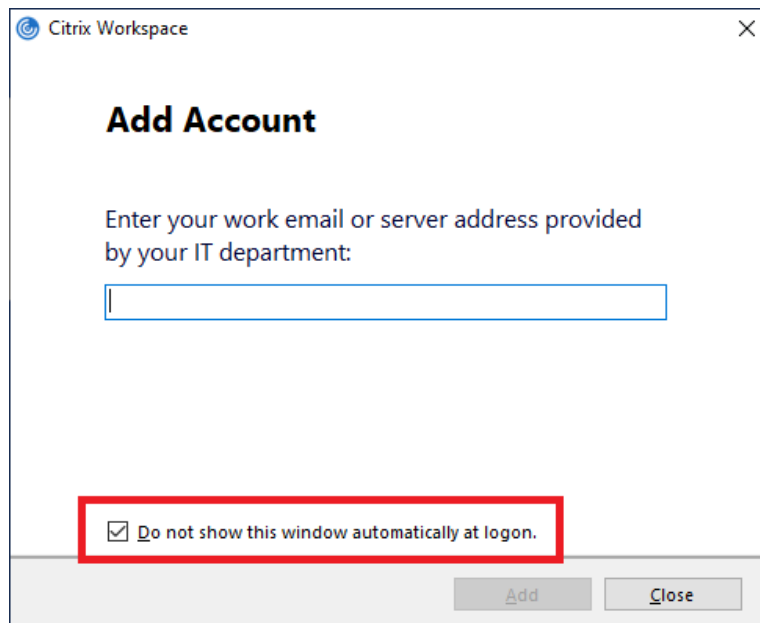
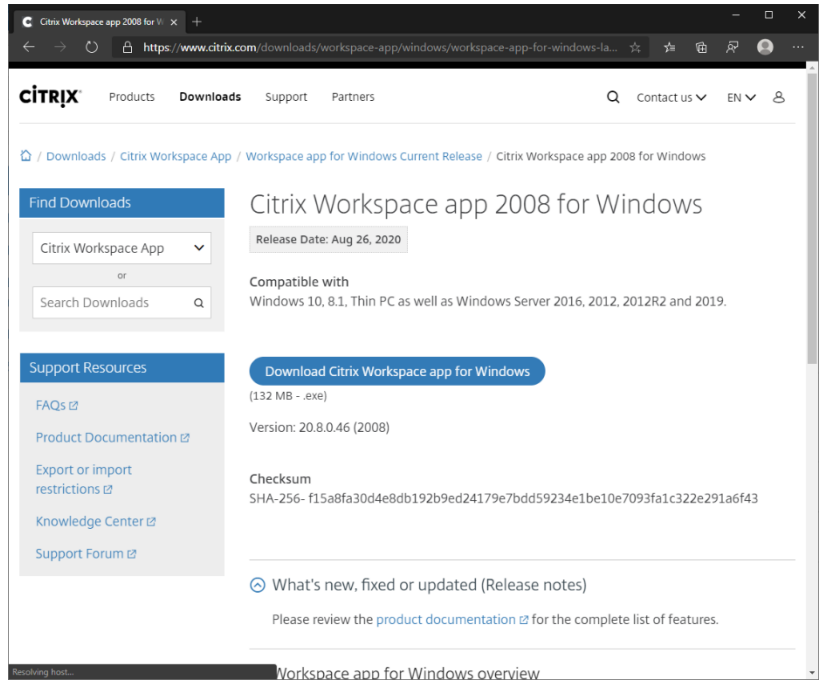
Windows 10/11:

1. Open a web browser and use the link <https://www.microsoft.com/en-us/p/citrix-workspace/9wzdnrcfj2kj>, or go to the Microsoft Store and search for “Citrix Workspace”.
2. Click on the blue Get button.



Older versions of Windows or MacOS:

1. Open a web browser and navigate to <https://www.citrix.com/products/receiver.html>.
2. Click on the blue **Download Receiver** button.
3. Install the downloaded package, with all the default options selected.
4. Restart your computer to insure a clean install.
5. After restarting, you might see this prompt, on the right. Select **“Do not show this window automatically at logon.”** and click **Close**.



For Beaumont-managed or Leased Workstations: Go to the Providers Portal

1. Open a web browser and navigate to <https://providers.beaumont.org/forms-and-documents/it-downloads>.
2. Under Downloads for Doctor's Offices, you'll find download links specialized versions for Citrix Receiver and other Beaumont applications.

Citrix Workspace app 2008 for V... IT Downloads | Beaumont Provid...
https://providers.beaumont.org/homepage-navigation/forms-and-documents/it-downloads

Beaumont For Providers

Employees Login

Find a Doctor Directories Education/ Training/ Research IT/ Reappointments Partnerships/ Office Resources Referral Service/ Video/Photos Wellness About Us

Beaumont is now able to support iPad™ and iPhone® use in any area that is accessible to the internet either by wireless connection or an available cellular network connection. By accessing the network, you can install Citrix onto your iPad or iPhone and have convenient access to all of the hospital's clinical systems, including *oneChart*.

- Portal Setup Instructions for Physicians
- Minimal Device Requirement to Connect to *oneChart*
- Installing Citrix on a Workstation
- Installing Citrix on an iPhone or iPad
- Logging onto the Beaumont Network on the iPhone
- Logging onto the Beaumont Network on the iPad

Downloads for Doctor's Offices

Beaumont offers these programs to doctor's offices. Most of these files are compressed zip files. Download the file. Open and uncompress the zip file. Once that is done, you can install the program with the files available.

- Dragon Medical 360 Full Install (4 GB zip file)
- Dragon Medical 360 Upgrade Only (367 MB zip file)
- **Citrix Receiver**
- Panasonic KV-S1027C Driver
- Panasonic KV-S1025C Driver
- Billing Software
- Citrix Store Front Internet shortcut

Epic 2017 Video Visits

1. Copy the [install exe file](#) under this folder to the local machine.
2. Execute the EXE installation using an administrative account.
3. During installation you will be prompted to choose the environment you wish to run video

Quick Links

TOP LINKS

- Apply for privileges at a Beaumont hospital
- Beaumont Email
- Beaumont Physician Insurance Company
- Case Management
- Compliance
- Concur Expense Reporting
- eBoarding
- Epic/oneChart
- IT Bookshelf
- MediTract
- myBeaumontConnection
- myCME Credit
- Pain Management Resources
- Physician Careers
- Physician Liaisons
- Physician Preference Guide
- RL Solutions

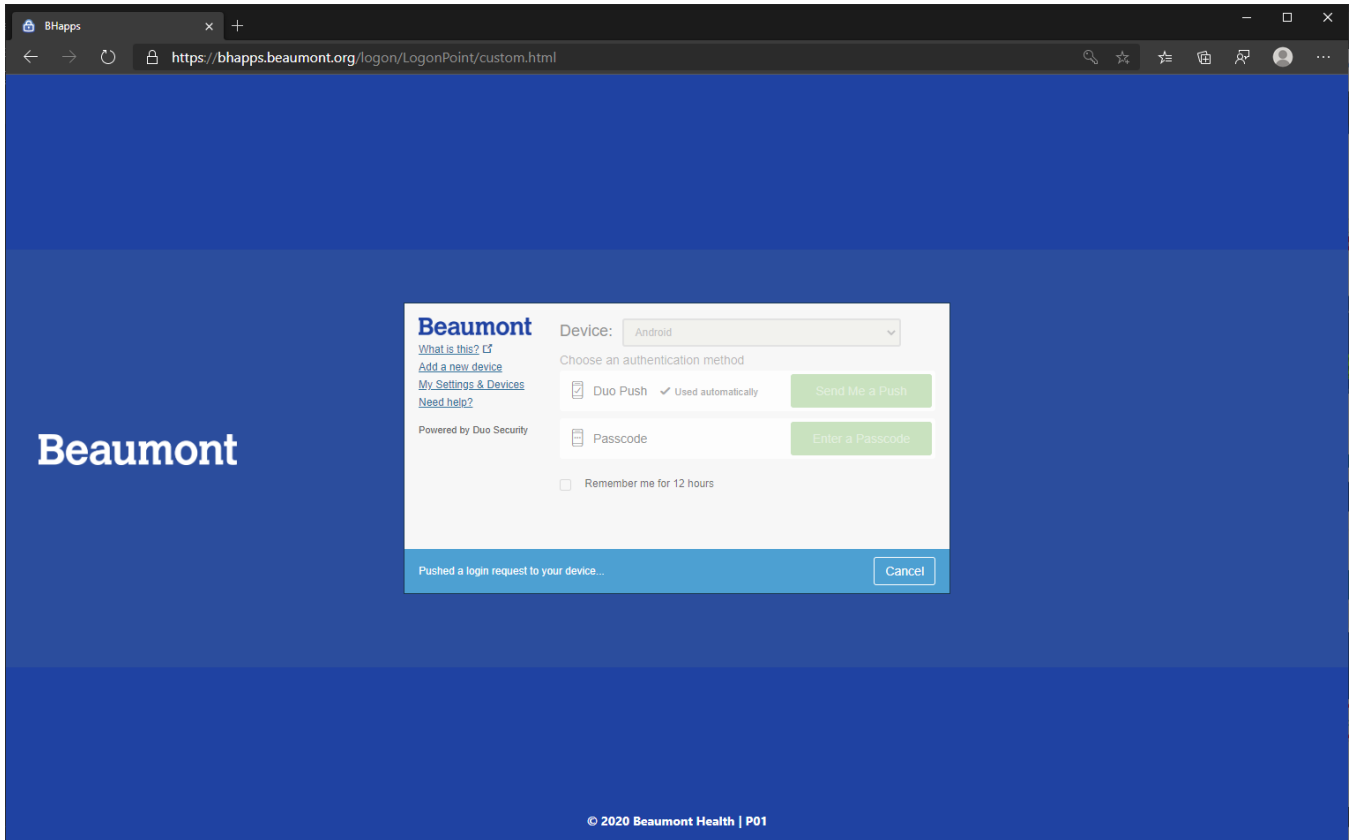
By clicking "Accept Cookies", you agree to the storing of cookies on your device to enhance site navigation, analyze site usage, and assist in our marketing efforts.

[Settings](#) [Accept](#)

Navigating to a Storefront

Connecting to your published applications (i.e., OneChart) can be accomplished by browsing to <https://bhapps.beaumont.org>.

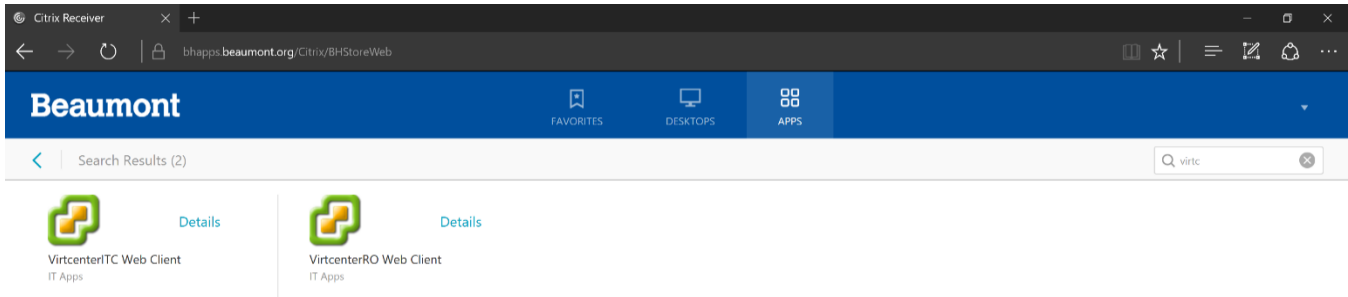
1. Open a web browser and navigate to <https://bhapps.beaumont.org>.
2. Enter your Beaumont workstation user name and password.
3. Click “Log On”.
4. If you are off the Beaumont network, you may be prompted by Duo for additional security.



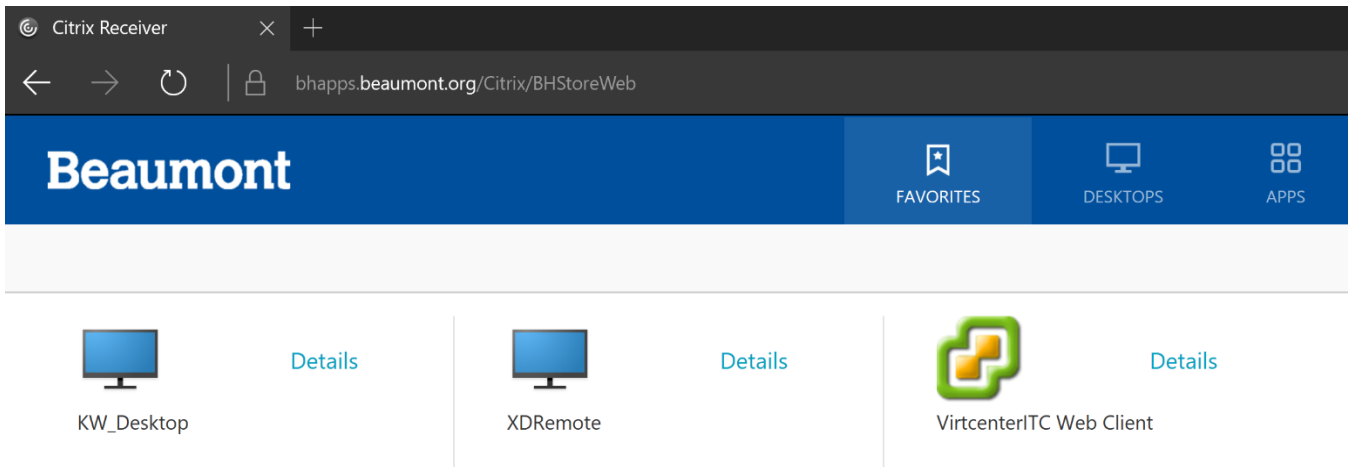
Adding Your Most Commonly Used Apps to Your Favorites

When you log into <https://bhapps.beaumont.org>, you will be on the Favorites tab. However, these may not be all the apps you use. They can be found under the Apps tab.

1. Click on the Apps tab, in the blue header on the top of the page.
2. Use the search field to search for your app. You don't have to hit enter, just start typing the name of your app and it will filter to the top. Alternatively, you can scroll down and find your app manually.



3. Click on the blue **Details**, and then **Add to Favorites**. This process also applies for VDIs, as shown below.



4. Removing an application from the Favorites tab follows the same process: Simply click on **Details** and then **Remove**. The application will still be available in the Apps tab.

Citrix Receiver x +
bhapps.beaumont.org/Citrix/BHStoreWeb

Beaumont

FAVORITES DESKTOPS APPS

<



VirtcenterITC Web Client

IT Apps

Open Remove

Further Help

Contact the Beaumont Health Service Desk:

- By telephone, toll-free at [\(888\) 481-2448](tel:8884812448).
- Online, using the [self-service portal](#).

